

# Shop Retail Display



# COMPANY PROFILE

## About us

Besto established in Foshan,China.We are the leading source for shop fittings. We manufacture high quality products. Our low prices and quality service insure that we have what you need to be a success in your business.

## Our products cover

Slatwall panel, slatwall gondola, display cabinet, glass display showcase, hardware display, shelves, accessories,acrylic displays.

## Service

We have professional designers and sales people, work for standard display products, shopfitting, custom display products, design for shops & stores like smoke shop, clothes shop, electronics store ,jewelry store, hardware store, etc.

## Export experts

As we have a favorable frame and stable quality control,our products can be found in nearly all continents.

## Shipping

- ✧ By sea, FOB shipment, CIF shipment, DDP shipment, FCL, LCL shipment.
- ✧ By air
- ✧ By Express

## Our Values

- ✧ In Besto,we stress shared three core values
- ✧ Professionalism
- ✧ Customer satisfaction
- ✧ Good and prompt after-sales support



## Slatwall Panels

Besto offers a variety of slatwall color options and accessories to bring visibility to product displays. All slatwall is constructed of medium density fiberboard 18mm thick. MDF slatwall is designed for lightweight applications only. Aluminum inserts must be used for heavier display.

Use the best material and provide varied of laminations for your selection.

Long established reputation of “Besto” brand for providing quality slatwall panels.

## In 5 quick steps, help to find the exact slatwall panels

### Step1-Slatwall Panel Dimensions

Slatwall MDF Thickness(mm):18/25mm	Type	Advantages
	<p><b>GS01</b> Landscape Slatwall 2400(L)*1200(H) 2440(L)*1220(H)</p>	<p>Minimizes your “visible seams”when installing Slatwall.It has 1/2 grooves on the top of and bottom of each sheet.By stacking one sheet on the top of another,the seam stays hidden when the two 1/2 grooves meet to form one slatwall Groove.</p>
	<p><b>GS02</b> Portrait Slatwall 1200(L)*2400(H) 1220(L)*2440(H)</p>	<p>Advantageous to use when wrapping slatwall Around interior columns or when the area needing slatwall is high and narrow.</p>
	<p><b>GS03</b> Landscape Slatwall 1200(L)*1200(H) 1220(L)*1220(H)</p>	<p>Small piece easy to carry and transportation.</p>

## Step2-Slatwall Groove Spacing

Standard Grooves	Grooves Quantity		The amount of distance Between each slatwall Groove is referred to as On Center(OC).For example, If you order 100mm OC Slatwall,your slatwall will have 100mm between each Groove.100mm OC slatwall Is retail industry standard size slatwall panel that creates more display space by having 23 slatwall grooves per Vertical sheet.
	GS01/GS03	GS002	
75mm OC	15	31	
100mm OC	11	23	
150mm OC	7	15	
200mm OC	5	11	
250mm OC	3	8	

## Step3-Slatwall Edge Finish

### ★End Cut(Recommended for Horizontal cut panel)

Allow your slatwall panels to be easily stacked on the top of one another to maintain the “on centre” groove spacing by having the 1/2 groove at the top and the 1/2 groove at the bottom to form one slatwall groove.

### ★Finished Cut(Recommended for vertical cut panel)

The finished edge gives your slatwall panels a clean finished appearance on the perimeter of each slatwall sheet.

## Step4-Slatwall Standard Colors



Unfinished



White



Grey



Black



Yellow



Red



Dark Grey



Mirror



Silver Grey



Maple



White Oak



Light Oak



Dark Oak



Beech



Cherry

## Step5-Slatwall Groove Treatment

We recommend using inserts with your panels for added weight-bearing and appearance.

### Aluminum Inserts

Metal channels added to provide extra strength and support ability, 80% stronger than without inserts.



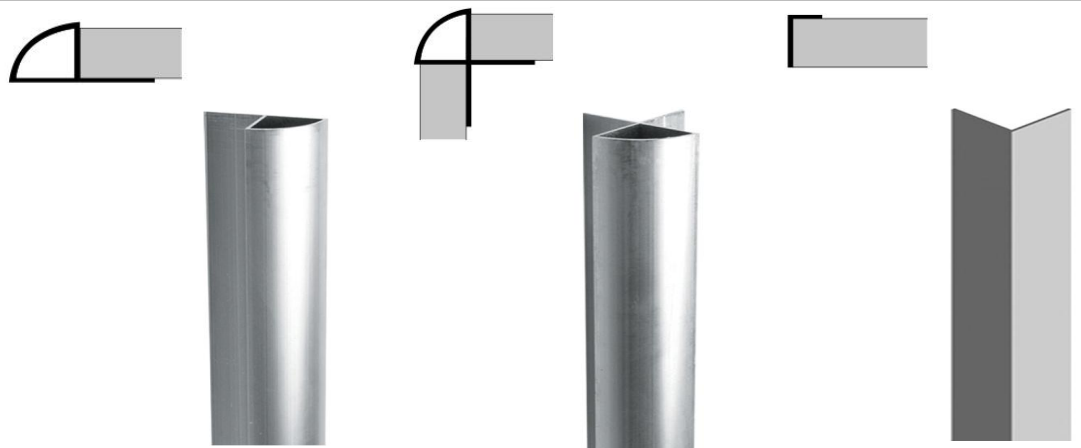
### PVC Inserts

Match the slatwall with grooves



### Aluminum Corner Profile

Match the slatwall with edges



# Slatwall Gondola

- Distinctive range of shop display cabinet manufacture with same colors as slatwall panels.
- Constructed using quality 18/25mm MDF ensure attractive and durable
- Make to order according to standard colors(white,gray,black,maple,beech,oak,cherry)



H UNIT(GS205)  
1200(W)X600(D)X1320(H)mm  
100mm gap heavy duty  
aluminum extrusions  
Available in white,black,gray,  
maple,beech or cherry color



4 WAY UNIT(GS209)  
910(W)X910(D)X1320(H)mm  
100mm gap heavy duty  
aluminum extrusions  
Available in white,black,gray,  
maple,beech or cherry color



T UNIT(GS804)  
1200(W)X600(D)X1320(H)mm  
100mm gap heavy duty  
aluminum extrusions  
Available in white,black,gray,  
maple,beech or cherry color



ROATING 4-SIDE UNIT(GS228)  
600(W)X600(D)X1350(H)mm  
100mm gap heavy duty  
aluminum extrusions  
Available in white,black,gray,  
maple,beech or cherry color



COUNTERTOP DISPLAY  
(GS285)

457(W)X305(D)X546(H)mm  
75mm gap heavy duty aluminum extrusions



COUNTERTOP DISPLAY  
(GS286)

305(W)X305(D)X527(H)mm  
75mm gap heavy duty aluminum extrusions

ROATING 4-SIDE UNIT(GS260)  
1200(W)X600(D)X1350(H)mm  
100mm gap heavy duty  
aluminum extrusions  
Available in white,black,gray,  
maple,beech or cherry color



# Slatwall Gondola



MINI H UNIT(GS803)  
 600(W)X600(D)X1300(H)mm  
 100mm gap heavy duty  
 aluminum extrusions  
 Available in white,black,gray,  
 maple,beech or cherry color



4 WAY UNIT(GS217)  
 600(W)X600(D)X1350(H)mm  
 100mm gap heavy duty  
 aluminum extrusions  
 Available in white,black,gray,  
 maple,beech or cherry color



ROATING 4-SIDE UNIT(GS224)  
 450(W)X450(D)X1450(H)mm  
 100mm gap heavy duty  
 aluminum extrusions  
 Available in white,black,gray,  
 maple,beech or cherry color



H UNIT(GS250)  
 1550(W)X800(D)X1350(H)mm  
 100mm gap heavy duty  
 aluminum extrusions  
 Available in white,black,gray,  
 maple,beech or cherry color

TRAPEZOID UNIT  
 (GS214)



1050(W)X650(D)X1400(H)mm  
 100mm gap heavy duty aluminum extrusions

H UNIT(GS215)  
 1200(W)X600(D)X1320(H)mm  
 100mm gap heavy duty  
 aluminum extrusions  
 Available in white,black,gray,  
 maple,beech or cherry color



COUNTERTOP DISPLAY  
 (GS807)

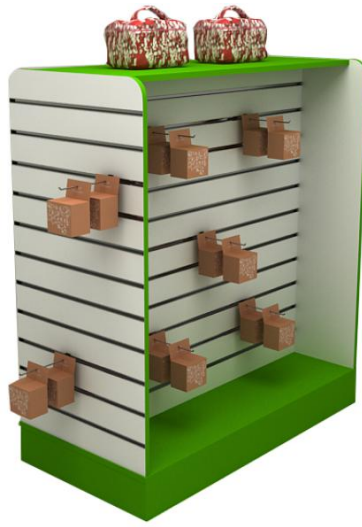
250(W)X250(D)X500(H)mm  
 75mm gap heavy duty aluminum extrusions



# Slatwall Gondola



L UNIT(GS05)  
1200(W)X405(D)X1500(H)mm  
100mm gap heavy duty  
aluminum extrusions  
Available in white,black,gray,  
maple,beech or cherry color



H UNIT(GS221)  
1200(W)X450(D)X1500(H)mm  
100mm gap heavy duty  
aluminum extrusions  
Available in white,black,gray,  
maple,beech or cherry color



H UNIT(GS233)  
1800(W)X600(D)X1920(H)mm  
100mm gap heavy duty  
aluminum extrusions  
Available in white,black,gray,  
maple,beech or cherry color

T UNIT(GS222)  
637(W)X600(D)X1360(H)mm  
100mm gap heavy duty  
aluminum extrusions  
Available in white,black,gray,  
maple,beech or cherry color



L UNIT  
(GS258)

1200(W)X450(D)X1300(H)mm  
100mm gap heavy duty aluminum extrusions

H UNIT  
(GS253)



1200(W)X600(D)X1300(H)mm  
100mm gap heavy duty aluminum extrusions



4 WAY UNIT(GS227)  
600(W)X600(D)X1350(H)mm  
100mm gap heavy duty  
aluminum extrusions  
Available in white,black,gray,  
maple,beech or cherry color



# Display Table



GS216  
900(W)X900(D)X1170(H)mm  
Available in white,black,gray,  
maple,beech or cherry color



GS223  
1200(W)X850(D)X1050(H)mm  
Available in white,black,gray,  
maple,beech or cherry color



GS256  
1250(W)X600(D)X800(H)mm  
1330(W)X800(D)X800(H)mm  
Available in white,black,gray,  
maple,beech or cherry color



GS244  
1210(W)X910(D)X950(H)mm  
Available in white,black,gray,  
maple,beech or cherry color

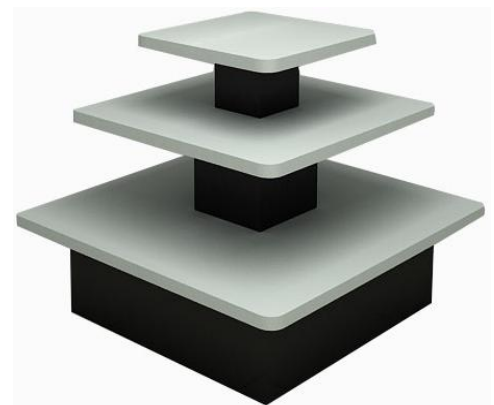


GS248  
2100(W)X790(D)X800(H)mm  
1100(W)X580(D)X600(H)mm  
Available in white,black,gray,  
maple,beech or cherry color



GS247  
1300(W)X550(D)X950(H)mm  
1200(W)X550(D)X750(H)mm  
1000(W)X550(D)X550(H)mm

Available in white,black,gray,  
maple,beech or cherry color



GS204  
1200(W)X1200(D)X990(H)mm  
Available in white,black,gray,  
maple,beech or cherry color

# Showcase

- Distinctive range of showcase manufacture with same colors as slatwall panels.
- Constructed using quality 18/25mm MDF ensure attractive and durable
- Make to order according to standard colors(white,black,gray,maple,beech or cherry color)



**GS315**  
 1200(W)X500(D)X950(H)mm  
 Available if following sizes  
 1200(L)X500(W)X950(H)  
 1500(L)X500(W)X950(H)  
 1800(L)X500(W)X950(H)  
 Available in white,black,gray,  
 maple,beech or cherry color



**GS316**  
 1200(W)X500(D)X950(H)mm  
 Available if following sizes  
 1200(L)X500(W)X950(H)  
 1500(L)X500(W)X950(H)  
 1800(L)X500(W)X950(H)  
 Available in white,black,gray,  
 maple,beech or cherry color



**GS319**  
 1200(W)X500(D)X950(H)mm  
 Available if following sizes  
 1200(L)X500(W)X950(H)  
 1500(L)X500(W)X950(H)  
 1800(L)X500(W)X950(H)  
 Available in white,black,gray,  
 maple,beech or cherry color

**GS314**  
 1200(W)X500(D)X950(H)mm  
 Available if following sizes  
 600(L)X500(W)X950(H)  
 1200(L)X500(W)X950(H)  
 1500(L)X500(W)X950(H)  
 1800(L)X500(W)X950(H)  
 Available in white,black,gray,  
 maple,beech or cherry color



**GS318(G)**  
 500(W)X500(D)X950(H)mm  
 Available in white,black,gray,  
 maple,beech or cherry color

**GS318(W)**  
 500(W)X500(D)X950(H)mm  
 Available in white,black,gray,  
 maple,beech or cherry color



**GS320**  
 1200(W)X500(D)X950(H)mm  
 Available if following sizes  
 600(L)X500(W)X950(H)  
 1200(L)X500(W)X950(H)  
 1500(L)X500(W)X950(H)  
 1800(L)X500(W)X950(H)  
 Available in white,black,gray,  
 maple,beech or cherry color



GS717  
1500(W)X680(D)X950(H)mm  
Available in white,black,gray,maple,beech or cherry color



GS710  
1500(W)X800(D)X950(H)mm  
Available in white,black,gray,maple,beech or cherry color



GS725  
1200(W)X600(D)X950(H)mm  
Available in white,black,gray,  
maple,beech or cherry color



GS713  
500(W)X500(D)X950(H)mm  
Available in white,black,gray,  
maple,beech or cherry color



GS711  
600(W)X500(D)X950(H)mm  
Available in white,black,gray,  
maple,beech or cherry color



GS721  
1200(W)X600(D)X950(H)mm  
Available in white,black,gray,  
maple,beech or cherry color



GS723  
550(W)X600(D)X950(H)mm  
Available in white,black,gray,  
maple,beech or cherry color



GS712  
600(W)X500(D)X950(H)mm  
Available in white,black,gray,  
maple,beech or cherry color

## Display Plinths

Most display cubes can be stacked high for increased visibility and we have some that are illuminated as well as some lovely solid looking pedestals and plinths in a variety of finishes from heritage wood to concrete.



GS100  
400(W)X400(D)X500(H)mm  
400(W)X400(D)X750(H)mm  
400(W)X400(D)X750(H)mm  
Available in white,black,gray,  
maple,beech or cherry color



GS600  
600(W)X450(D)X150(H)mm  
Available in white,black,gray,  
maple,beech or cherry color



GS900  
900(W)X450(D)X150(H)mm  
Available in white,black,gray,  
maple,beech or cherry color



GS1200  
1200(W)X450(D)X150(H)mm  
Available in white,black,gray,  
maple,beech or cherry color

## Display Shelf



MDF Shelf  
300(W)X600(D)X18(T)mm  
300(W)X900(D)X18(T)mm  
300(W)X1200(D)X18(T)mm

400(W)X300(D)X18(T)mm  
400(W)X600(D)X18(T)mm  
400(W)X900(D)X18(T)mm  
400(W)X1200(D)X18(T)mm



Available in white,black,gray,maple,beech or cherry color

# Glass display cabinet

Glass display cabinet is made of aluminum frames & temper glass, equipped with LED lights, lockable glass door, glass shelves, suits for vape store, smoke shop, tobacco display, jewelry display, electronics store, exhibitions, museum and all retail stores.



BST-G01 Glass Tall Cabinet

Size available:

1000(W)X400(D)X1980(H)mm  
1000(W)X450(D)X1980(H)mm  
1200(W)X400(D)X1980(H)mm  
1200(W)X500(D)X1980(H)mm

Colors available: black, white, silver

Features:

LED lights, Quick assemble, US&European standard



BST-G02 Glass Tall Cabinet(with storage)

Size available:

1000(W)X400(D)X1980(H)mm  
1000(W)X450(D)X1980(H)mm  
1200(W)X400(D)X1980(H)mm  
1200(W)X500(D)X1980(H)mm  
Storage height: 500mm

Colors available: black, white, silver

Features:

LED lights, Quick assemble, US&European standard



BST-G03  
Glass counter

Size available:

1200(L)X500(D)X950(H)mm  
1500(L)X500(D)X950(H)mm  
1800(L)X500(D)X950(H)mm

Colors: black, white, silver  
LED lights, Quick assemble,  
US&European standard



BST-G04 Glass counter  
With storage  
(storage height: 350mm)

Size available:

1200(L)X500(D)X950(H)mm  
1500(L)X500(D)X950(H)mm  
1800(L)X500(D)X950(H)mm

Colors: black, white, silver  
LED lights, Quick assemble,  
US&European standard



BST-G05 Hexagon Glass counter  
 Size: 750(L)X750(D)X950(H)mm  
 Colors: black, white, silver  
 LED lights bulbs & led strips, quick assemble,  
 US&European standard.



With storage

BST-G06 Hexagon Glass counter (with storage)

Size: 750(L)X750(D)X950(H)mm  
 Storage height: 350mm  
 Colors: black, white, silver  
 LED lights bulbs & led strips, quick assemble,  
 US&European standard.



BST-G07 Glass Tall cabinet (600)

Size: 600(L)X500(D)X1980(H)mm  
 Color: black, white, silver  
 LED lights bulbs & led strips, quick  
 assemble, US&European standard.

BST-G07 Hexagen Glass Tall  
 cabinet (with storage)

Size: 750(L)X750(D)X1980(H)mm  
 Storage height: 500mm  
 Color: black, white, silver  
 LED lights bulbs & led strips, quick  
 assemble, US&European standard.

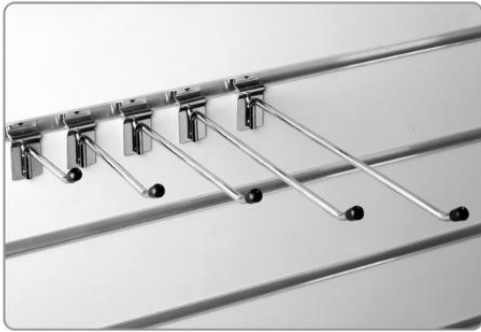


BST-G08 Frameless glass cabinet

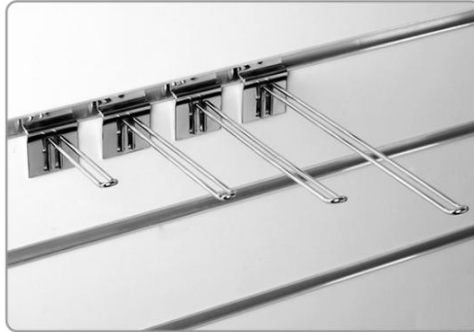
Size: 600(L)X500(D)X1800mm  
 Base MDF height: 200mm  
 Glass thickness: shelves is 8mm,  
 top/side/glass door glass is 6mm.  
 With glass hinged door & lock.  
 LED lights is available.

# ACCESSORIES SERIES

Slatwall Hooks are the essential slatwall accessory. Our high quality hooks come in either slatwall pegs or slatwall hooks and are available in a variety of lengths. Our fine & lightweight hooks are ideal for displaying small accessories such as earrings, bracelets and necklaces.



GSB035 Ø5  
L:50/100/150/200/250/300/350/400



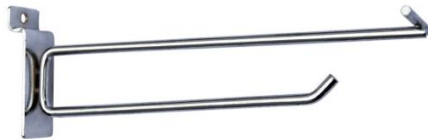
GSB036 Ø5  
L:100/150/200/250/300/350



GSB013 T:2.5  
L:150/200/250/300/350



GSB054 Ø8  
L:270/300



GSB039 Ø5  
L:100/150/200/250/300/350/400



GSB043 Ø6 L:90X110XØ138



GSB013 T:2.5  
L:150/200/250/300/350



GSB054 Ø6 L:100XØ138



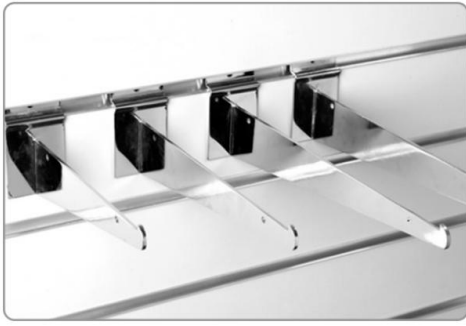
GSB061 Ø8  
L:100X50X100X50X100



GSB041 Ø5  
L:100/150/200/250/300/350



GSB044 Ø6 L:270



GSB004 T:2.5  
L:150/180/210/255/300/360/400



GSB103 T:2.5  
L:250/300/350/400



GSB114 T:15X30  
300X600/900/1000/1200  
350X600/900/1000/1200



GSB109 T:15X30  
200X250X200



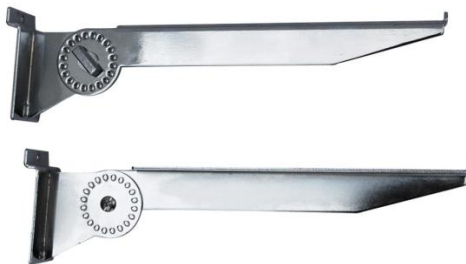
GSB069 Ø5  
100X150X100



GS828  
600X150X300



GSB114 T:15X30  
L:400



GSC029 T:2.5  
L:300/350/400



GSB105 T:15X30  
L:300/350/400



GSB108 T:15X30  
L:320/370

# Packing & Container loading



MDF Slatwall pallets loading



MDF Slatwall pallets loading



MDF Slatwall with shelves loading



MDF Slatwall with other goods loading

MDF Slatwall 1200x1200mm packed by carton (2pcs per carton for strong export use) 1200x1200mm.



Step 1

Step 2



Step 3



Step 4

Packages & container loading of MDF Slatwall (1200x2400mm & 1200x1200mm), custom display & shelves, combine container loading.

## Glass display showcase cabinet packing way



Packing of Glass display showcase & glass counter  
US&European standard packing of glass showcase by plywood, good for container loading or LCL DDP shipment.



Glass & MDF shelves packing.



**Reliable Quality-Reasonable Price-Professional Service**

***Contact Us Today!***

***Foshan Besto Display Co.,Ltd.***

***Contact Person:Victor***

***Mobile No:0086-15800065905***

***E-mail:victor@bestodisplay.com***